



KAIROS / João Quintela + Tim Simon

24
2013 JUN

Featured Selected Works
Structures João Quintela Lisbon
Portugal Tim Simon



131



37



© Diana Quintela

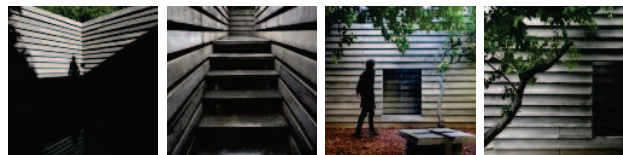
Architects: **João Quintela + Tim Simon**

Location: **Lisbon, Portugal**

Architects: **João Quintela, Tim Simon**

Year: **2012**

Photographs: **Diana Quintela**



SELECTED BUILDINGS



MORE SELECTED BUILDINGS >

MOST VISITED OF THE WEEK

27 Jun 2013
**House in Sengataki /
Case Design Studio**



© Diana Quintela

To the linear and chronological time 'CHRONOS' opposes 'KAIROS', an undefined and symbolic time which cannot be measured except by his quality. The building wants to put two apparently irreconcilable times in dialogue. Since the very ancient periods buildings aspire to the idea of the 'eternal' through a spatiality and materiality able to resist time. The great temples and cathedrals, completely made out of natural stone, continue to coexist with the contemporaneity. Concrete constructions represent undoubtedly the legacy of modernity and they recover as well this symbolic idea of eternity.



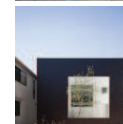
28 Jun 2013
India's Forgotten Stepwells



27 Jun 2013
Wood and the Dog / StudioErrante Architetture

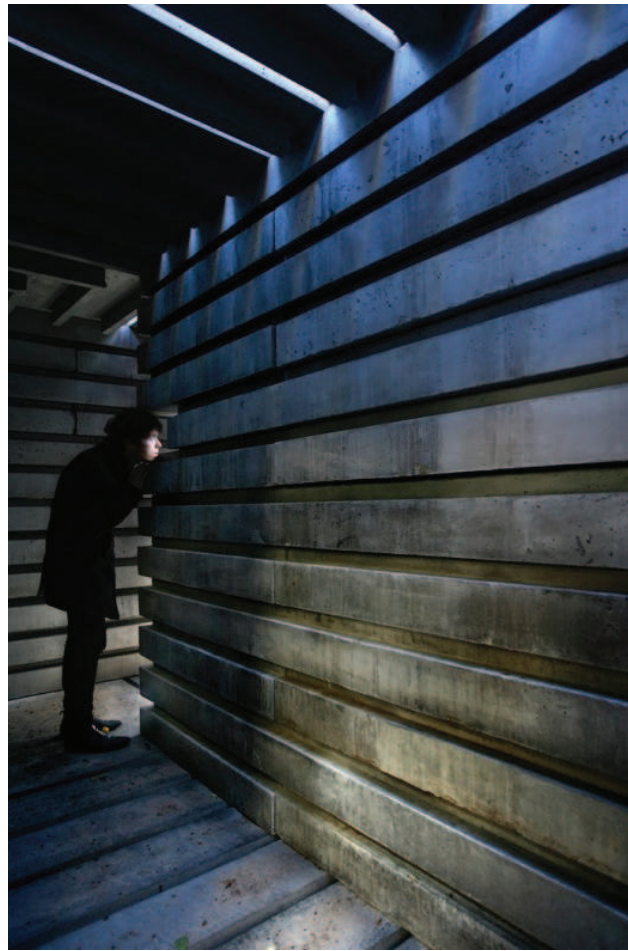


25 Jun 2013
Frame / UID Architects



27 Jun 2013
Kontum Indochine Café / Vo Trong Nghia Architects





© Diana Quintela

This confront between the temporary and the eternal is something worth researching through a general view to the possibilities that our time can offer us. This prefab solution is capable to deal simultaneously with these two aspects as it allows us working with a durable and resistant material dialoguing with continuous Time, through a modular construction and an easy assembly or disassembly.



© Diana Quintela

KAIROS, created by João Quintela and Tim Simon, appears as a result of a spatially research referenced in history through the use of Matter, Light and Time. The Matter of the Concrete, the Light of the Sun and the Time built from both. It's an investigation about proportions and the relationship between the small scale of the isolated module and the large scale of the whole building itself in relation with the context.



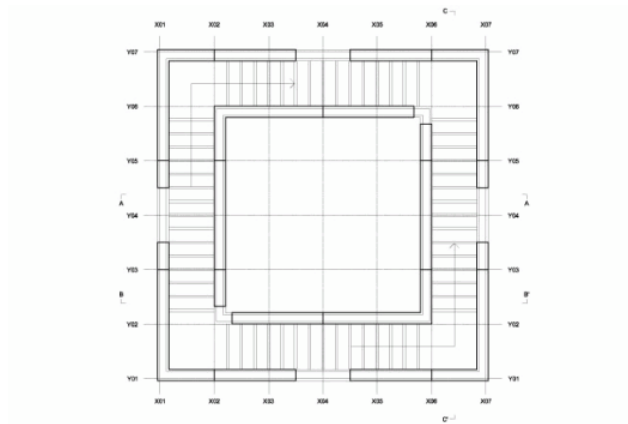
© Diana Quintela

The space is built by a very easy and primitive constructive system of overlapping and joining pieces, taking advantage of their own weight without using any glue or screws. It's a square plan building with an inside square patio. Thus, there exists a perimeter all around that consists in a path developed both on the lower and upper level, generating two similar spaces with completely antagonistic ambiances. One is covered and black while the other is exterior and bright.



© Diana Quintela

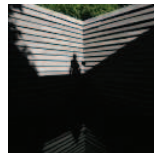
The inner patio is defined by the mirror created through the water inside which reflects the sky and duplicates the space. This becomes the central element, inaccessible and contemplative, able to freeze time and build an intimate moment, a dialogue with the past. Becomes the most significant space and acquires symbolism due to his impossible conquer.



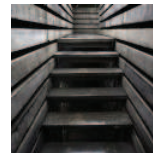
Floor Plan



© Diana Quintela



© Diana Quintela



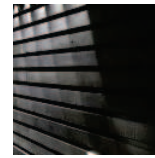
© Diana Quintela



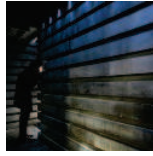
© Diana Quintela



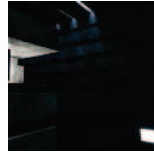
© Diana Quintela



© Diana Quintela



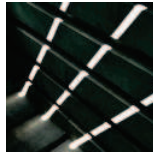
© Diana Quintela



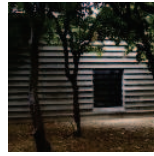
© Diana Quintela



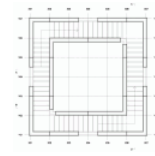
© Diana Quintela



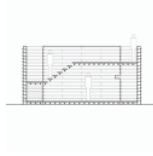
© Diana Quintela



© Diana Quintela



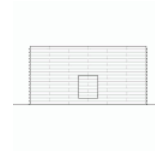
Floor Plan



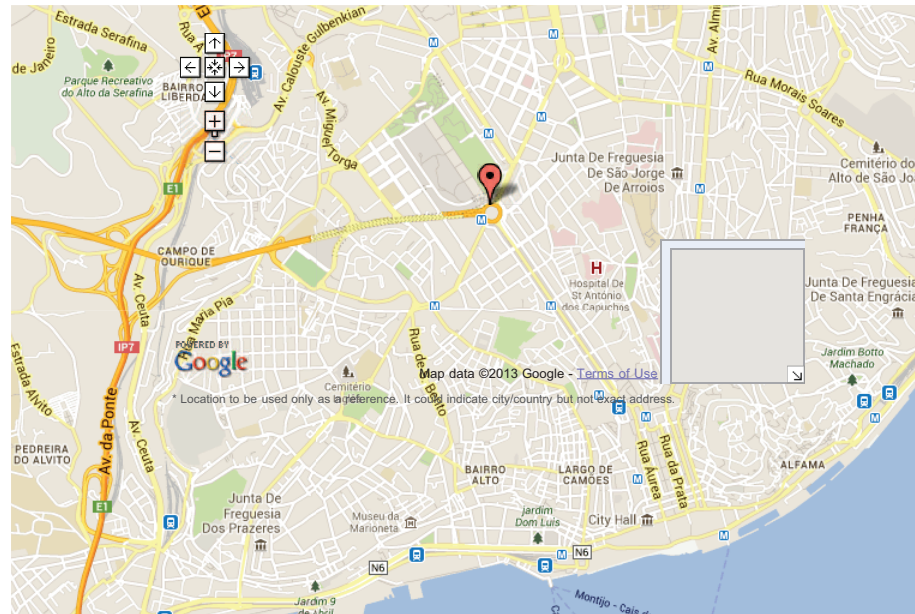
Section



Section



Elevation





1 comment



Nani Sa on

Interesting circulation.lovely design.



0

Reply

Share your thoughts

If you want your own avatar and keep track of your discussions with the community, [sign up for My ArchDaily!](#) »

(required)

(required, will not be published)

Post

Notify me of followup comments via e-mail

OUR PARTNERS

THE HUFFINGTON POST



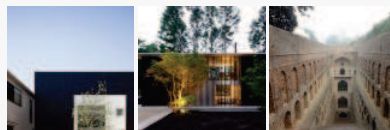
BUSINESS INSIDER

ARCHITONIC

RECENT PROJECTS



MOST BOOKMARKED



RECENT NEWS



THANKS FOR VISITING



© ArchDaily 2008-2013. All rights reserved.
All images are © each office/photographer mentioned.

FOLLOW US IN



CONTACT INFORMATION

- [Contact](#)
- [Advertising](#)
- [Terms of Use](#)
- [Privacy Policy](#)